

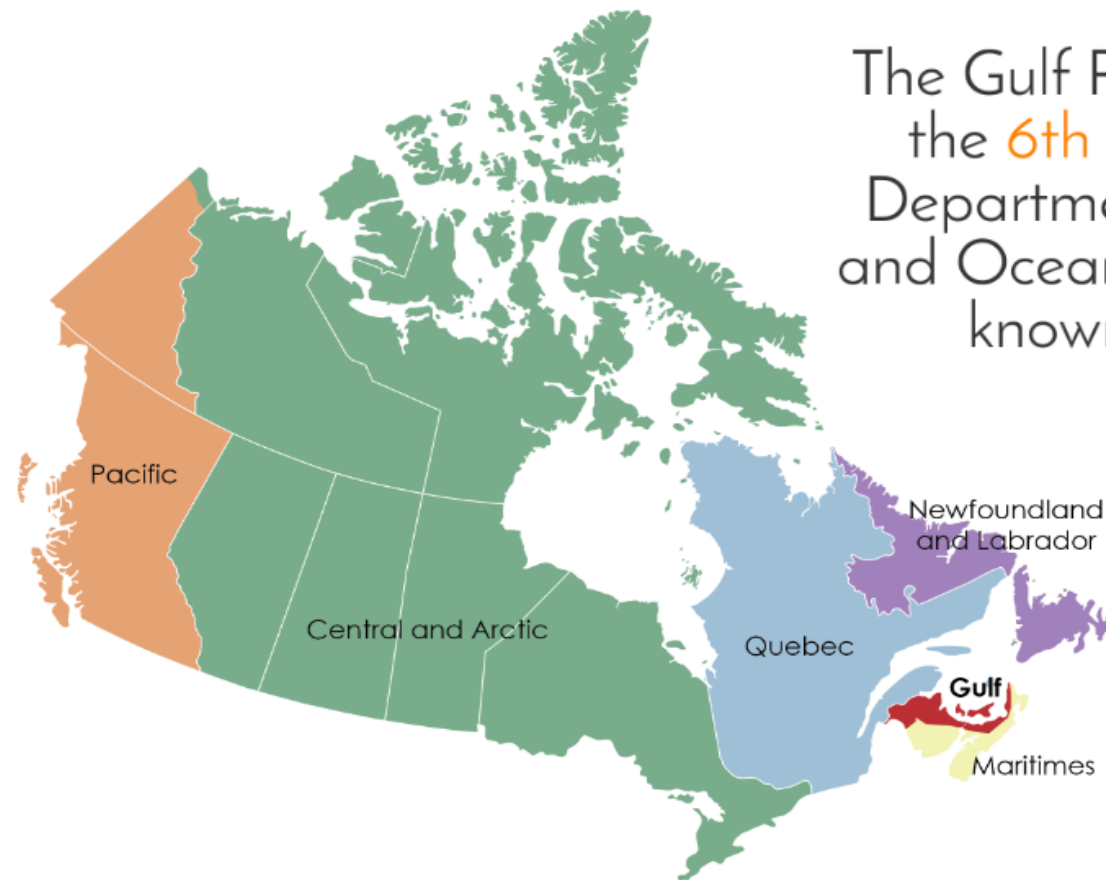
more than  
its small  
m.



# What is the Gulf Region?



The Gulf Region was created in 1981 to serve the coastal communities surrounding the Southern Gulf of St. Lawrence.



The Gulf Region became the 6th region of the Department of Fisheries and Oceans Canada also known as DFO.





The regional headquarters for the Gulf Region are located in **Moncton**, New Brunswick.

Area offices are located in **Charlottetown**, P.E.I.,  
**Antigonish**, N.S.,  
and  
**Tracadie**, N.B.



There are also 7 Conservation and Protection detachments and 12 sub-detachments.

Chéticamp

Pictou

Tracadie

Baie-Sainte-Anne

Alberton

Neguac

Charlo

Caraquet

Renous

Summerside

Richibucto

Antigonish

Souris

Charlottetown

South Esk

Grand Falls

Shippagan

Shediac

Beresford

The Gulf Region is DFO's only  
**officially bilingual region** in Canada  
apart from the National Capital  
Region in Ottawa.





The Gulf Region is home to more than  
**120 harbours** managed by its small  
craft harbour program.

Including Canada's **largest  
inshore fishing harbour** at  
Escuminac, N.B.

More than **3,500 registered  
vessels** dock in our harbours.





Collaboration  
with indigenous  
communities





The Gulf Region is committed to fostering positive relations with the indigenous communities and supporting their interests in fisheries and other marine activities.

14 indigenous communities  
have fishing access in the  
Southern Gulf of  
St. Lawrence

The **Richibucto** harbour in New Brunswick is a wonderful example of collaboration.

It serves three distinct fishing cultures: the **Aboriginal**, **Acadian** and **Anglophone** communities of the area.







# A diversified habitat

A satellite map showing the St. Lawrence Gulf and surrounding landmasses. The water is a deep blue, and the land is green with some brown patches. A semi-transparent grey box is overlaid on the top left, and white text is at the bottom right. In the top right, there is a small inset map of the Gulf of St. Lawrence with a red location pin and two lines of text.

7,000 km of  
coastline

The Southern Gulf of St. Lawrence has  
some of the warmest surface waters in  
Atlantic Canada during summer.

It also has the largest amount of  
sea ice during winter.

Covers an area of  
240,000 km<sup>2</sup>



The Southern Gulf of St. Lawrence has some of the **warmest surface waters** in Atlantic Canada during summer.



It also has the largest amount of **sea ice** during winter.







Home to several marine mammals,  
including whales, seals,  
and dolphins.

Eelgrass, an underwater  
plant, plays a very important  
role in the Southern Gulf of  
St. Lawrence biodiversity.

**Eelgrass**, an underwater plant, plays a very important role in the Southern Gulf of St. Lawrence biodiversity.





# Marine Protected Area

## Basin Head, P.E.I.

It contains many different types of animal and plant life, including a unique strain of Irish moss that is not found anywhere else in the world.





Among the most  
productive marine areas  
in Canada



Sh  
The Gulf  
60% c  
Mussels and oys



10,717 fishermen caught  
77,454 tonnes of fish and  
crustaceans in 2016

### Most harvested species

19,617t



Snow Crab

23,472t



Herring

27,067t



Lobster





The Gulf Region accounts for 15% of the total catch value of Canadian fisheries from less than 1% of Canada's waters.





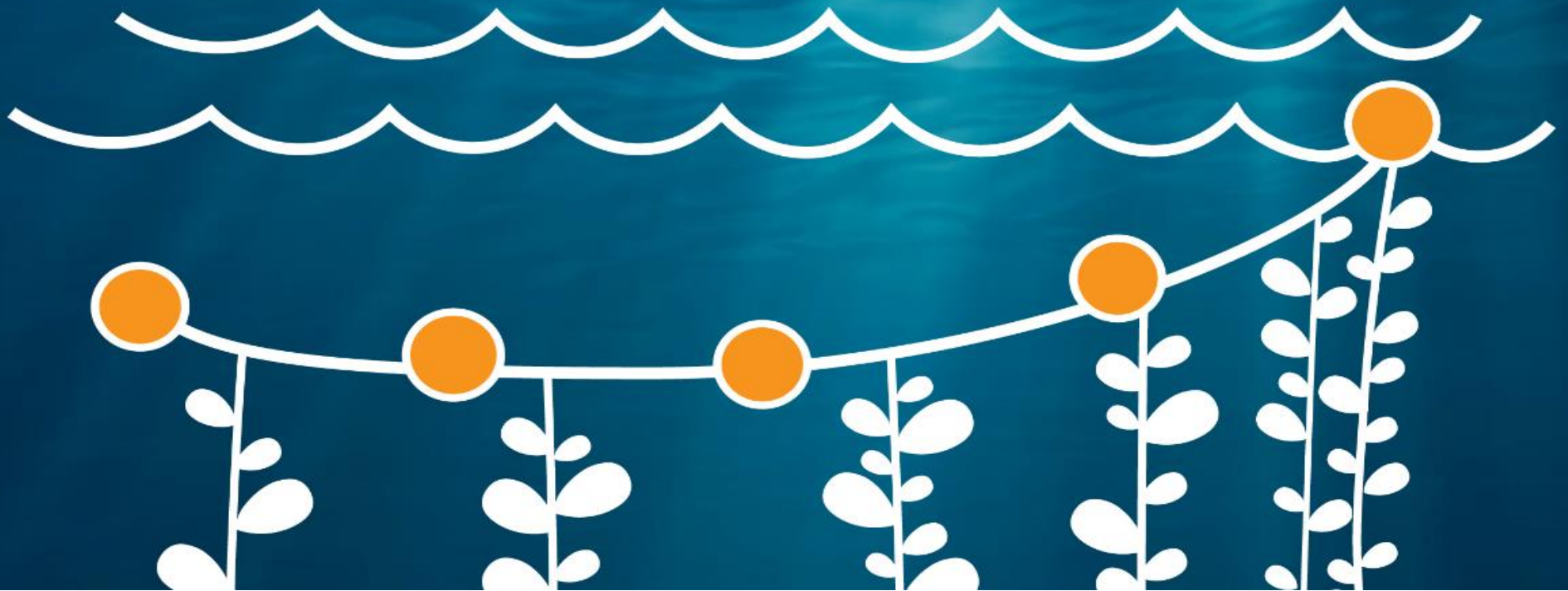
# 2016 Gulf Region landed value (\$ million) by species.



# Shellfish Aquaculture

The Gulf Region accounts for more than  
60% of the total Canadian shellfish  
production.

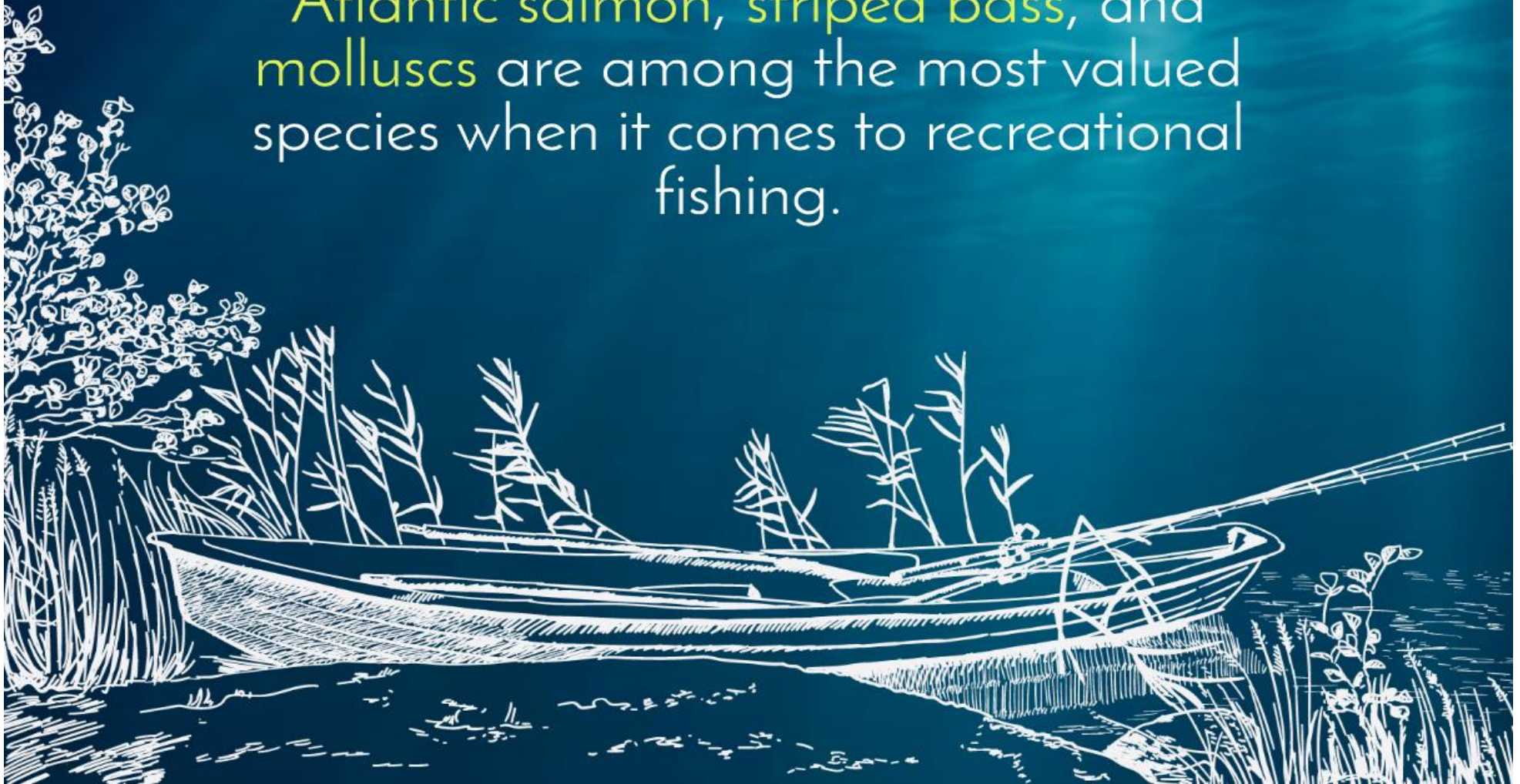
Mussels and oysters are the two main species being cultivated  
in the Gulf Region.





# Recreational Fisheries

Atlantic salmon, striped bass, and molluscs are among the most valued species when it comes to recreational fishing.





A focus on science



**SCIENCE**

# 1/3 of the Gulf Region's workforce is dedicated to science

The Gulf Region is recognized internationally for its innovative research in aquatic animal health.



Its laboratories received ISO 17025 accreditation - the single most important standard for testing laboratories around the world.



Scientists conduct surveys, do research and provide stock assessments for fished species.

$$\omega = \frac{2\pi}{T} = 2\pi f$$



Scientists also research shellfish aquaculture, fish disease, marine protected areas, aquatic invasive species and species at risk.

$$\pi = 3.14$$



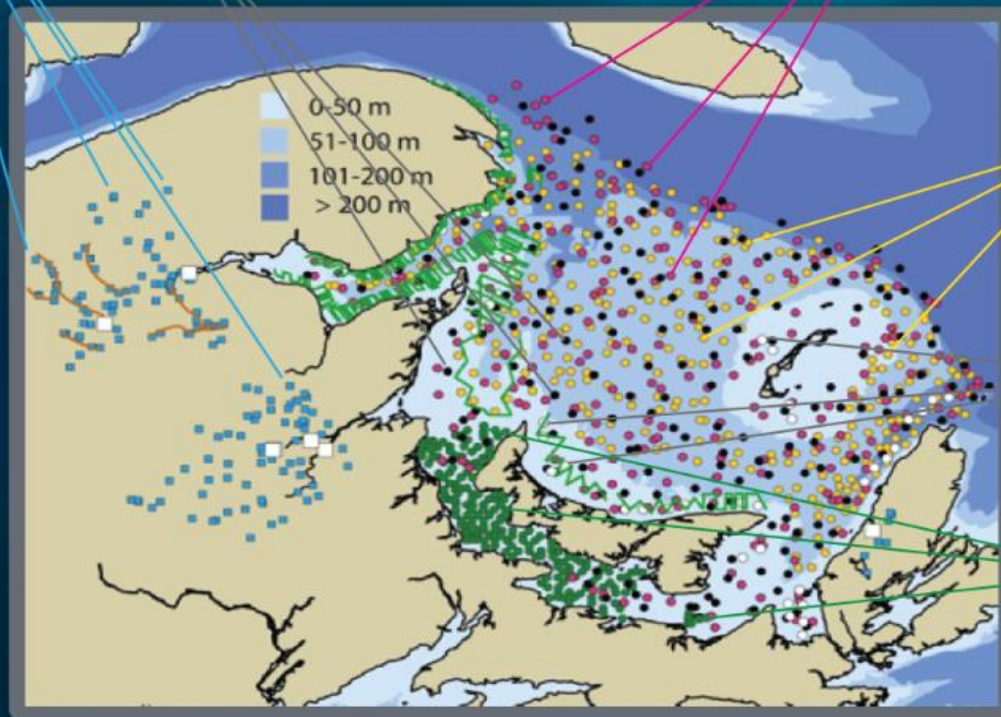


Scientists conduct field surveys annually to collect population data.

■ Electrofishing survey stations

● Multi-species trawl survey

● Sentinel August trawl survey



● Snow crab survey

● Sentinel longline survey

● Northumberland Strait trawl survey



# Compliance and Enforcement



More than 100 fishery officers in the Gulf Region work at protecting fish resource and habitats.





Canada 