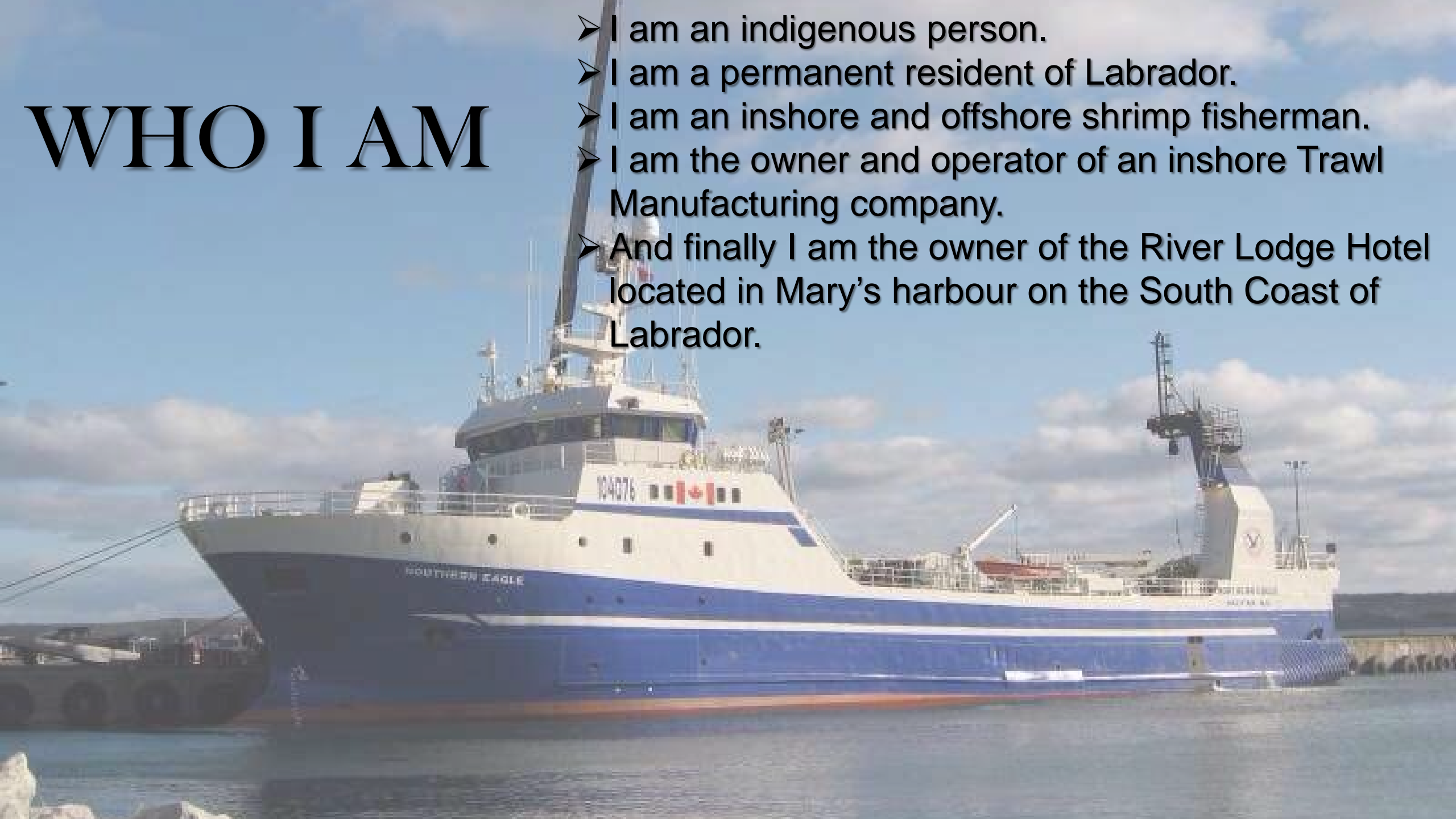
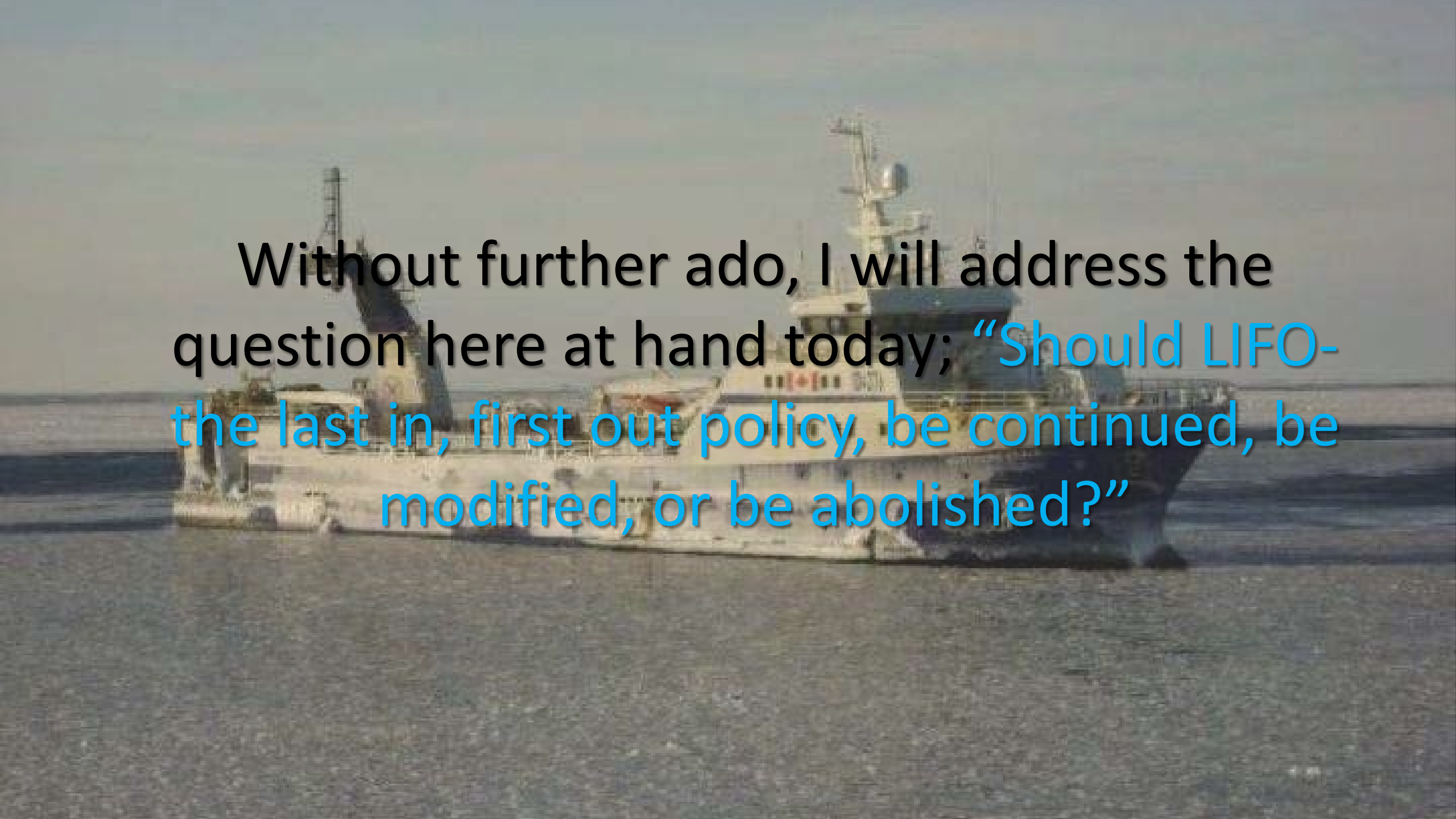


WHO I AM

- I am an indigenous person.
- I am a permanent resident of Labrador.
- I am an inshore and offshore shrimp fisherman.
- I am the owner and operator of an inshore Trawl Manufacturing company.
- And finally I am the owner of the River Lodge Hotel located in Mary's harbour on the South Coast of Labrador.



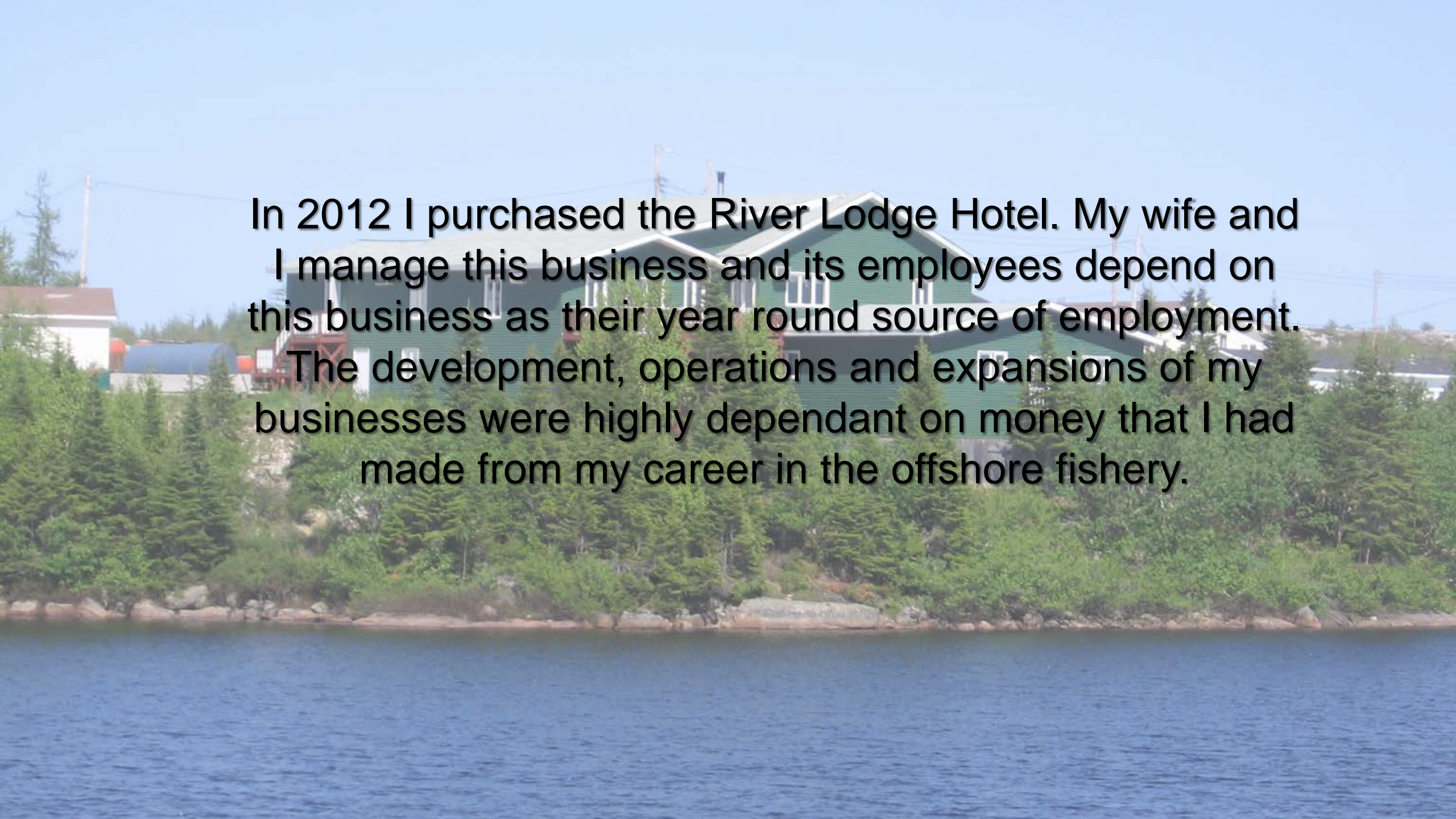
A large blue and white ship, possibly a ferry or cargo vessel, is shown at sea. The ship has a prominent white superstructure with a blue roof and a blue hull. It is moving through the water, leaving a white wake. The background is a clear, light blue sky and a calm sea. Overlaid on the image is text in black and blue. The text reads: "Without further ado, I will address the question here at hand today; 'Should LIFO-the last in, first out policy, be continued, be modified, or be abolished?'"

Without further ado, I will address the question here at hand today; "Should LIFO-the last in, first out policy, be continued, be modified, or be abolished?"



In September 1998, I incorporated my Twine Company where I manufacture shrimp trawl and gear.





In 2012 I purchased the River Lodge Hotel. My wife and I manage this business and its employees depend on this business as their year round source of employment. The development, operations and expansions of my businesses were highly dependant on money that I had made from my career in the offshore fishery.



Labrador Crew Members

