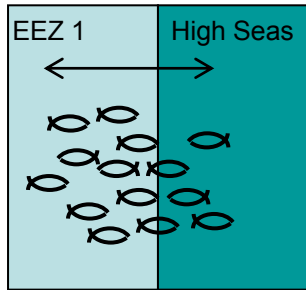
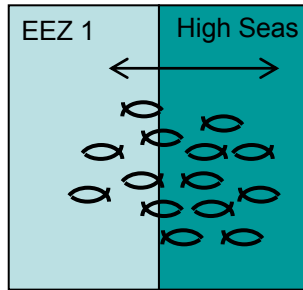


Figure A: Straddling and Highly Migratory Fish Stocks



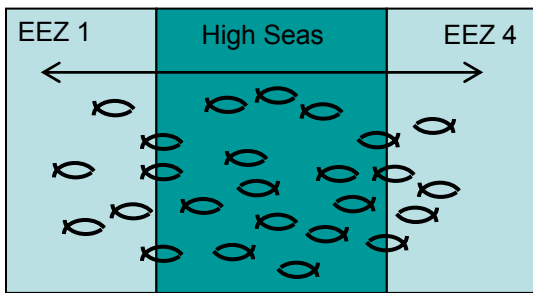
1. Straddling Stock
(mostly EEZ)



2. Straddling Stock
(mostly High Seas)



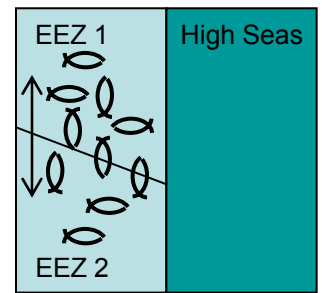
3. Straddling Stock
(evenly distributed)



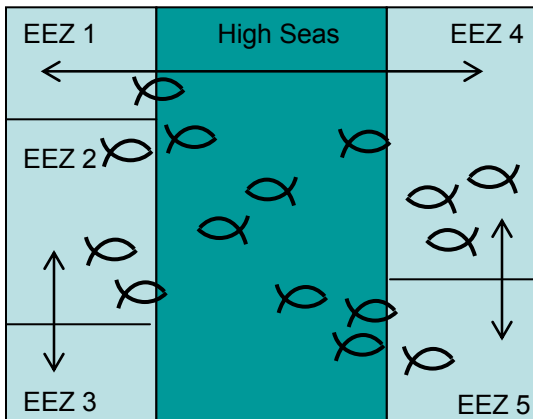
4. Straddling Stock
(extensive distribution)



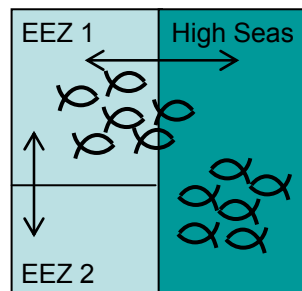
5. Straddling Stock
(transboundary)



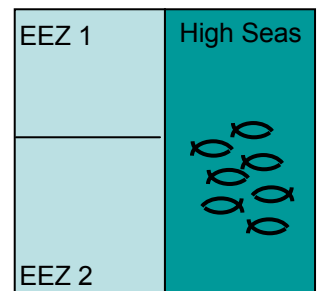
6. Transboundary, Joint
or Shared Stock
(Not Straddling)



7. Highly Migratory Stock
(Tunas and Tuna-like Species)



8. Highly "Mobile"
Migratory Fish Stock
(e.g. Skipjack)



9. Discrete Stock
(only High Seas
Not Straddling)

Straddling Stocks occur both inside the Exclusive Economic Zone (EEZ) and on the High Seas. Some stocks may occur primarily in one EEZ (Fig. 1) or primarily on the High Seas (Fig. 2), while others may be evenly distributed between an EEZ and the High Seas (Fig. 3). Straddling Stocks of broadly distributed species, and species with life cycle shifts in distribution may occur on the High Seas and in one or more EEZs (Fig. 4 & 5). Fig. 6 & 9 are not straddling or highly migratory fish stocks but are included for clarity to define Transboundary Stocks, and Discrete Stocks. Fig. 7 & 8 depict Highly Migratory (tuna and tuna-like) Fish Stocks.